

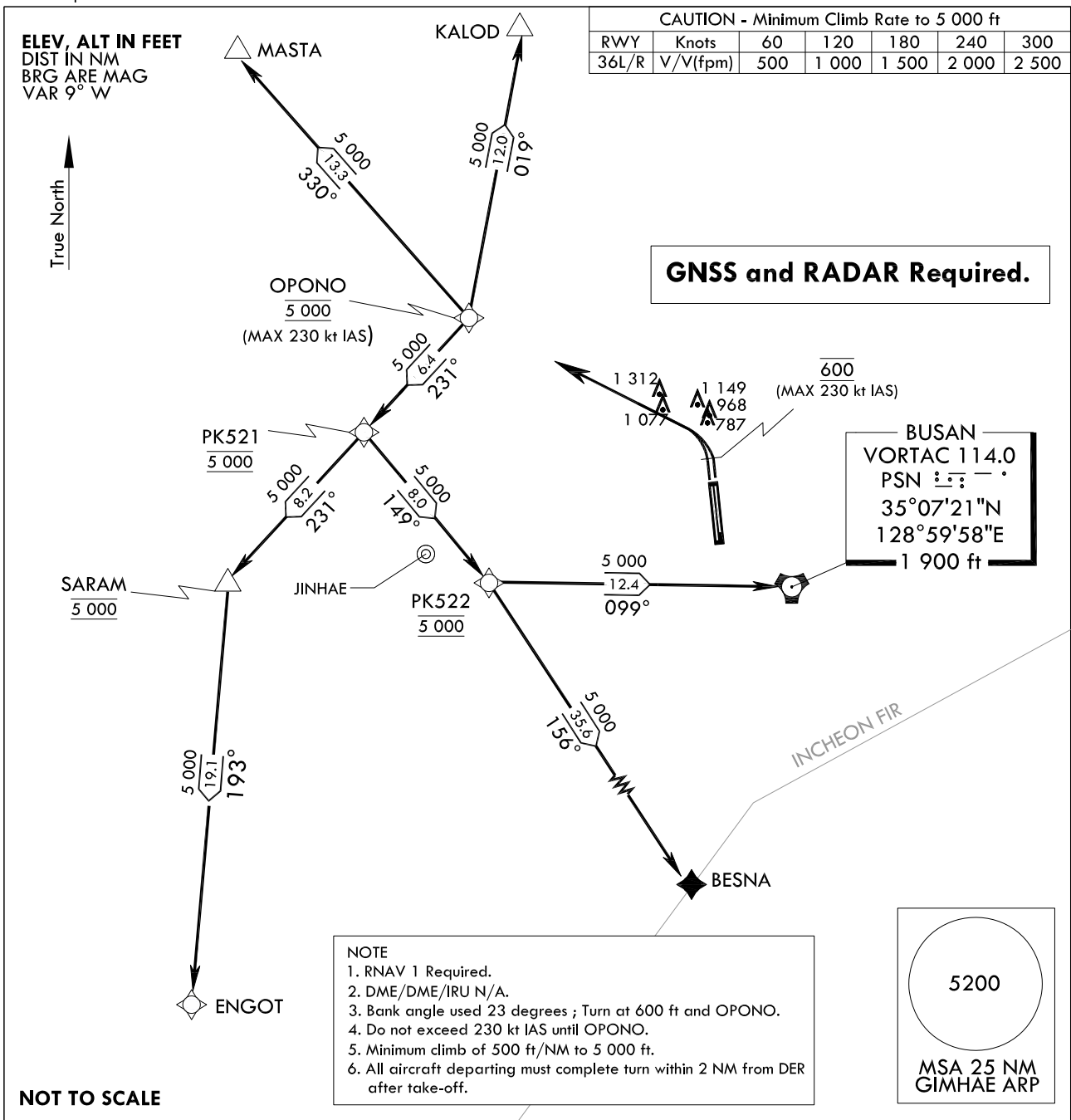
**STANDARD DEPARTURE
CHART - INSTRUMENT(SID)**

TRANSITION ALT 14 000
TRANSITION LVL FL 140

GIMHAE DEP 125.5
363.8
GIMHAE TWR 118.1
118.450

**BUSAN/Gimhae Intl(RKPK)
RWY 36L/R
RNAV(GNSS) Opono 3**

Note : Departure under U.S. TERPS.



DEPARTURE PROCEDURE DESCRIPTION

OPONO 3 DEPARTURE

TAKE-OFF RWY 36L/R : Climb HDG 002° to 600 ft then direct to cross Opono at 5 000 ft, thence.....
..... via (TRANSITIONS routes) and climb assigned altitude by ATC.

KALOD Transition : From Opono on track 019° to KALOD.

MASTA Transition : From Opono on track 330° to MASTA.

ENGOT Transition : From Opono on track 231° to cross PK521 at 5 000 ft,
then on track 231° to cross SARAM at 5 000 ft, then on track 193° to ENGOT.

BESNA Transition : From Opono on track 231° to cross PK521 at 5 000 ft,
then on track 149° to cross PK522 at 5 000 ft, then on track 156° to BESNA.

BUSAN(PSN) Transition : From Opono on track 231° to cross PK521 at 5 000 ft,
then on track 149° to cross PK522 at 5 000 ft, then on track 099° to BUSAN(PSN).

Change : Information of MAG VAR(7° W → 9° W) and standard instrument departure procedure for RWY 36L/R.

**BUSAN/Gimhae INTL(RKPK)
RWY 36L/R
RNAV(GNSS) OPONO 3**

AERONAUTICAL DATA TABULATION

Standard Instrument Departure Procedure Coding Tables

Departure Route - RWY 36R

Serial Number	Path Descriptor	Waypoint Identifier	Fly-over	Course/Track °M(°T)	Distance (NM)	Turn direction	Altitude (ft)	Speed (kt)	Coordinates	VPA/TCH	Navigation specification	Remarks
001	-	RWY 18L	-	-	-	-	-	-	35°11'38.60"N 128°56'14.73"E	-	RNAV 1	DER
002	VA	-	-	002.48(353.96)	-	-	@600	-230	-	-	RNAV 1	CG 500 ft/NM to 5 000 ft
003	DF	OPONO	-	-	-	-	@5 000	-230	35°18'24.2"N 128°43'46.2"E	-	RNAV 1	-

Departure Route - RWY 36L

Serial Number	Path Descriptor	Waypoint Identifier	Fly-over	Course/Track °M(°T)	Distance (NM)	Turn direction	Altitude (ft)	Speed (kt)	Coordinates	VPA/TCH	Navigation specification	Remarks
001	-	RWY 18R	-	-	-	-	-	-	35°11'37.94"N 128°56'06.46"E	-	RNAV 1	DER
002	VA	-	-	002.47(353.95)	-	-	@600	-230	-	-	RNAV 1	CG 500 ft/NM to 5 000 ft
003	DF	OPONO	-	-	-	-	@5 000	-230	35°18'24.2"N 128°43'46.2"E	-	RNAV 1	-

RNAV OPONO 3 - BUSAN(PSN VORTAC) Transition

Serial Number	Path Descriptor	Waypoint Identifier	Fly-over	Course/Track °M(°T)	Distance (NM)	Turn direction	Altitude (ft)	Speed (kt)	Coordinates	VPA/TCH	Navigation specification	Remarks
001	TF	PK521	-	230.92(222.40)	6.36	-	@5 000	-	35°13'42.0"N 128°38'32.2"E	-	RNAV 1	-
002	TF	PK522	-	148.74(140.22)	8.04	-	@5 000	-	35°07'30.3"N 128°44'48.6"E	-	RNAV 1	-
003	TF	PSN	-	099.12(090.60)	12.44	-	+5 000	-	35°07'21.5"N 128°59'58.5"E	-	RNAV 1	PSN VORTAC

RNAV OPONO 3 - BESNA Transition

Serial Number	Path Descriptor	Waypoint Identifier	Fly-over	Course/Track °M(°T)	Distance (NM)	Turn direction	Altitude (ft)	Speed (kt)	Coordinates	VPA/TCH	Navigation specification	Remarks
001	TF	PK521	-	230.92(222.40)	6.36	-	@5 000	-	35°13'42.0"N 128°38'32.2"E	-	RNAV 1	-
002	TF	PK522	-	148.74(140.22)	8.04	-	@5 000	-	35°07'30.3"N 128°44'48.6"E	-	RNAV 1	-
003	TF	BESNA	-	156.25(147.73)	35.62	-	+5 000	-	34°37'18.0"N 129°07'51.0"E	-	RNAV 1	-

RNAV OPONO 3 - ENGOT Transition

Serial Number	Path Descriptor	Waypoint Identifier	Fly-over	Course/Track °M(°T)	Distance (NM)	Turn direction	Altitude (ft)	Speed (kt)	Coordinates	VPA/TCH	Navigation specification	Remarks
001	TF	PK521	-	230.92(222.40)	6.36	-	@5 000	-	35°13'42.0"N 128°38'32.2"E	-	RNAV 1	-
002	TF	SARAM	-	230.87(222.35)	8.23	-	@5 000	-	35°07'36.3"N 128°31'46.7"E	-	RNAV 1	-
003	TF	ENGOT	-	193.27(184.75)	19.06	-	+5 000	-	34°48'34.48"N 128°29'51.68"E	-	RNAV 1	-

RNAV OPONO 3 - MASTA Transition

Serial Number	Path Descriptor	Waypoint Identifier	Fly-over	Course/Track °M(°T)	Distance (NM)	Turn direction	Altitude (ft)	Speed (kt)	Coordinates	VPA/TCH	Navigation specification	Remarks
001	TF	MASTA	-	330.01(321.49)	13.25	-	+5 000	-	35°28'47.0"N 128°33'40.0"E	-	RNAV 1	-

RNAV OPONO 3 - KALOD Transition

Serial Number	Path Descriptor	Waypoint Identifier	Fly-over	Course/Track °M(°T)	Distance (NM)	Turn direction	Altitude (ft)	Speed (kt)	Coordinates	VPA/TCH	Navigation specification	Remarks
001	TF	KALOD	-	018.98(010.46)	11.98	-	+5 000	-	35°30'12.1"N 128°46'26.5"E	-	RNAV 1	-

Change : Information of standard instrument departure procedure for RWY 36L/R.

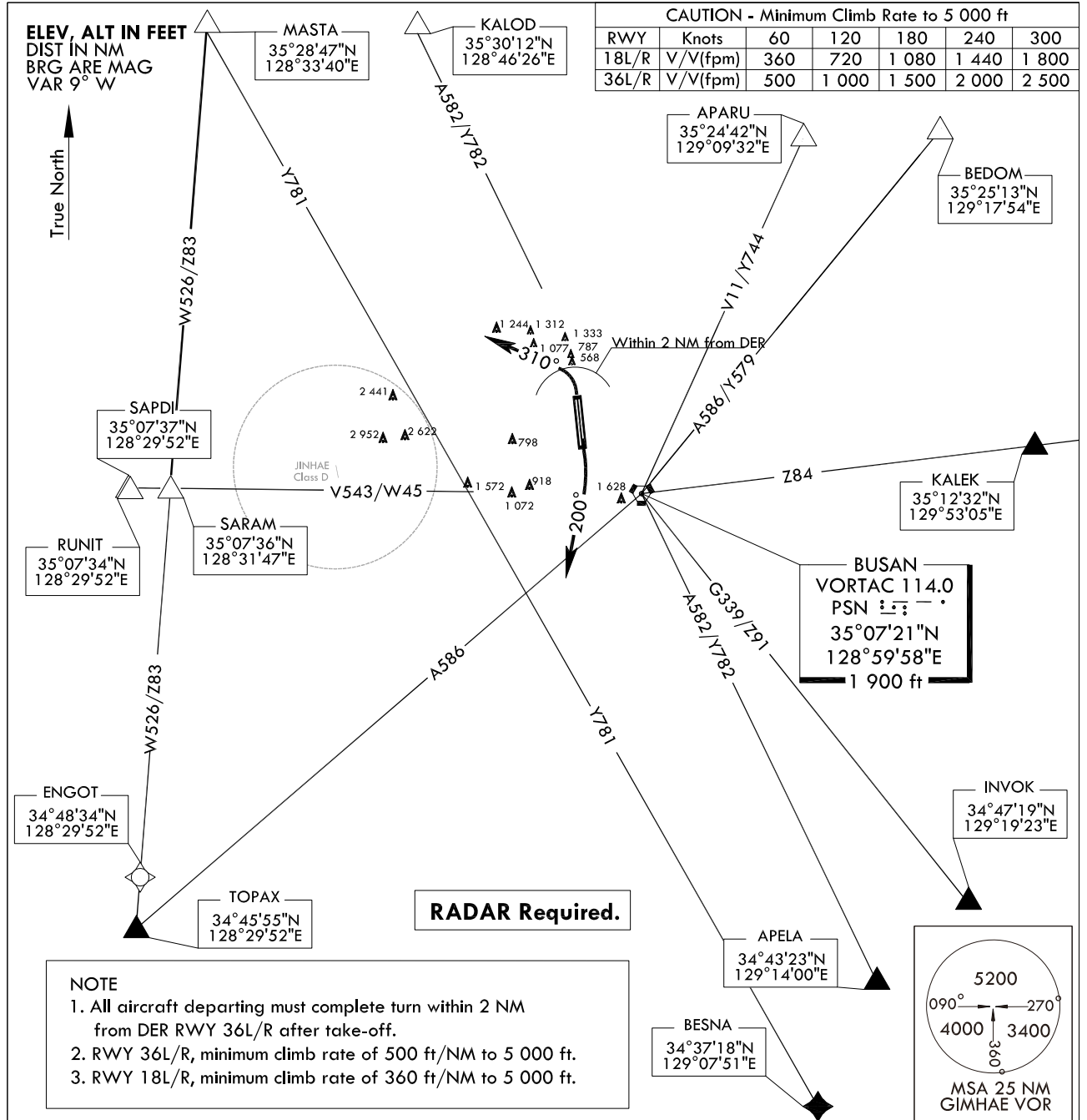
**STANDARD DEPARTURE
CHART - INSTRUMENT(SID)**

TRANSITION ALT 14 000
TRANSITION LVL FL 140

GIMHAE DEP 125.5
363.8
GIMHAE TWR 118.1
118.450

BUSAN/Gimhae Intl(RKPK)
RWY 36L/R
RWY 18L/R
GIMHAE 2

Note : Departure under U.S. TERPS.



DEPARTURE ROUTE DESCRIPTION

GIMHAE 2 DEPARTURE

TAKE-OFF RWY 36L/R : Climb left turn HDG 310°, Thence.....
TAKE-OFF RWY 18L/R : Climb right turn HDG 200°, Thence.....

.....Expect radar vectors to intercept filed Enroute fix or Navaid.
Maintain 5 000 ft or assigned altitude (flight level).
Expect filed altitude/flight level 10 minutes after departure.

LOST COMMUNICATIONS : If radio contact is not established with departure control prior to reaching 5 000 ft, continue climb to 8 000 ft before turning to filed fix/Navaid and proceed filed route and altitude.

Change : Information of MAG VAR(7° W → 9° W) and standard instrument departure procedure for RWY 18L/R, 36L/R.

INTENTIONALLY

LEFT

BLANK

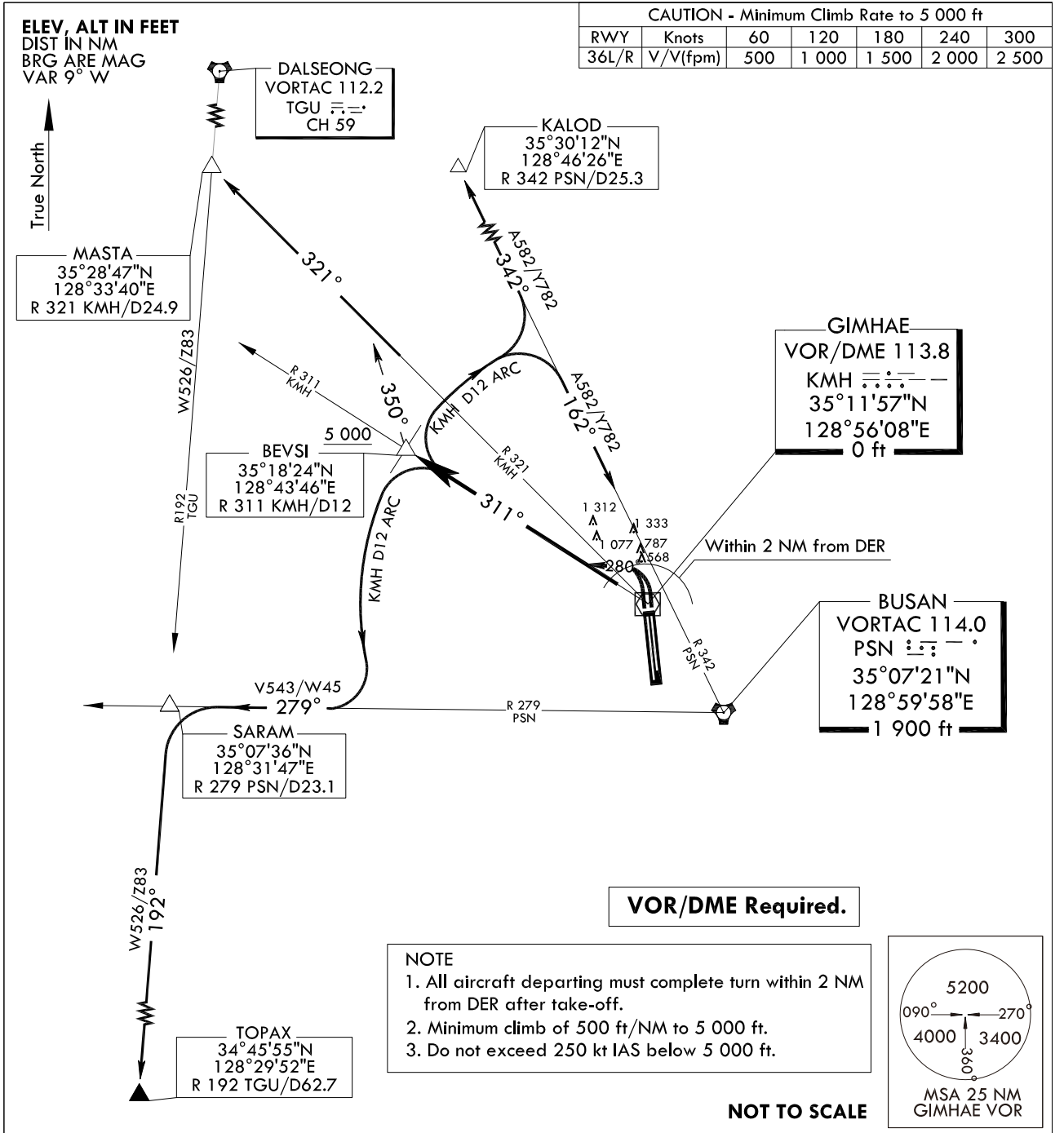
**STANDARD DEPARTURE
CHART - INSTRUMENT(SID)**

TRANSITION ALT 14 000
TRANSITION LVL FL 140

GIMHAE DEP 125.5
363.8
GIMHAE TWR 118.1
118.450

BUSAN/Gimhae Intl(RKPK)
RWY 36L/R
BEVSI 3

Note : Departure under U.S. TERPS.



DEPARTURE ROUTE DESCRIPTION

BEVSI 3 DEPARTURE

TAKE-OFF RWY 36L/R : Climbing left turn HDG 280° to intercept R 311 KMH and R 311 KMH to cross BEVSI at or above 5 000 ft. thence.....
.....via (TRANSITIONS), climb assigned altitude or as directed by ATC.

KALOD Transition : Right turn and proceed via KMH D12 arc to R 342 PSN, then via R 342 PSN to KALOD.

BUSAN(PSN) Transition : Right turn and proceed via KMH D12 arc to R 342 PSN, then via R 342 PSN to PSN.

MASTA Transition : Right turn HDG 350° to intercept R 321 KMH, then R 321 KMH to MASTA.

TOPAX Transition : Left turn and proceed via KMH D12 arc to R 279 PSN, then via R 279 PSN to SARAM, then left turn via R 192 TGU to TOPAX.

Change : Information of MAG VAR(7° W → 9° W) and standard instrument departure procedure for RWY 36L/R.

INTENTIONALLY

LEFT

BLANK

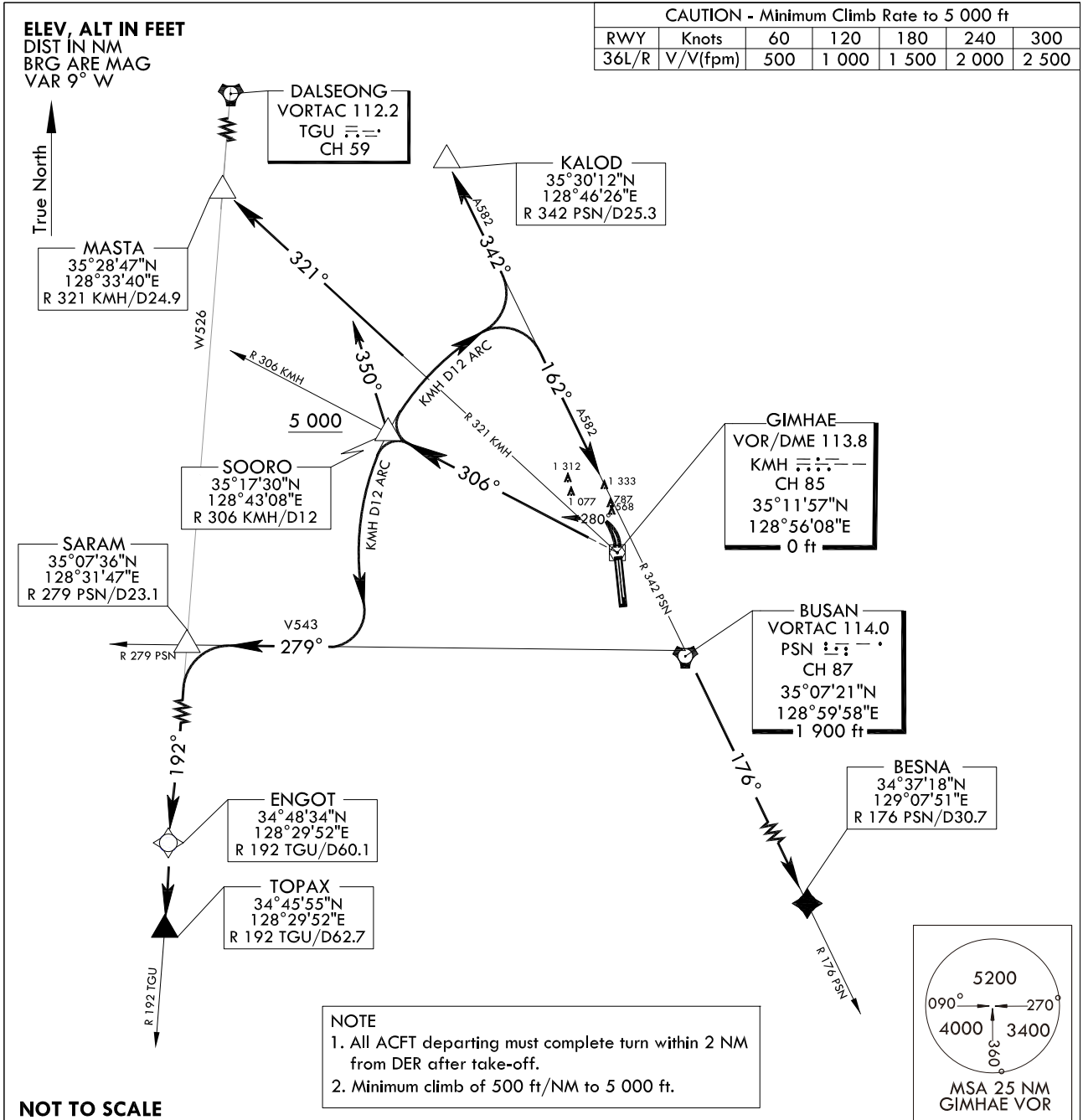
STANDARD DEPARTURE
CHART - INSTRUMENT(SID)

TRANSITION ALT 14 000
TRANSITION LVL FL 140

GIMHAE DEP 125.5
363.8
GIMHAE TWR 118.1
118.450

BUSAN/Gimhae Intl(RKPK)
RWY 36L/R
SOORO 2

Note : Departure under U.S. TERPS.



NOT TO SCALE

DEPARTURE ROUTE DESCRIPTION

SOORO 2 DEPARTURE

TAKE-OFF RWY 36L/R : Climbing left turn as soon as practicable HDG 280° to intercept R 306 KMH and R 306 KMH to cross SOORO at or above 5 000 ft. thence.....
.....via (TRANSITIONS), climb assigned altitude or as directed by ATC.

KALOD Transition : Right turn and proceed via KMH D12 arc to R 342 PSN, then via R 342 PSN to KALOD.

BUSAN(PSN) Transition : Right turn and proceed via KMH D12 arc to R 342 PSN, then via R 342 PSN to PSN.

MASTA Transition : Right turn HDG 350° to R 321 KMH, then R 321 KMH to MASTA.

TOPAX Transition : Left turn and proceed via KMH D12 arc to R 279 PSN,
then via R 279 PSN to SARAM, then left turn via R 192 TGU to TOPAX.

BESNA Transition : Right turn and proceed via KMH D12 arc to R 342 PSN,
then via R 342 PSN to PSN, then via R 176 PSN to BESNA.

ENGOT Transition : Left turn and proceed via KMH D12 arc to R 279 PSN,
then via R 279 PSN to SARAM, then left turn via R 192 TGU to ENGOT.

Change : Information of MAG VAR(7° W → 9° W) and standard instrument departure procedure for RWY 36L/R.

INTENTIONALLY

LEFT

BLANK

STANDARD DEPARTURE
CHART - INSTRUMENT(SID)

TRANSITION ALT 14 000
TRANSITION LVL FL 140

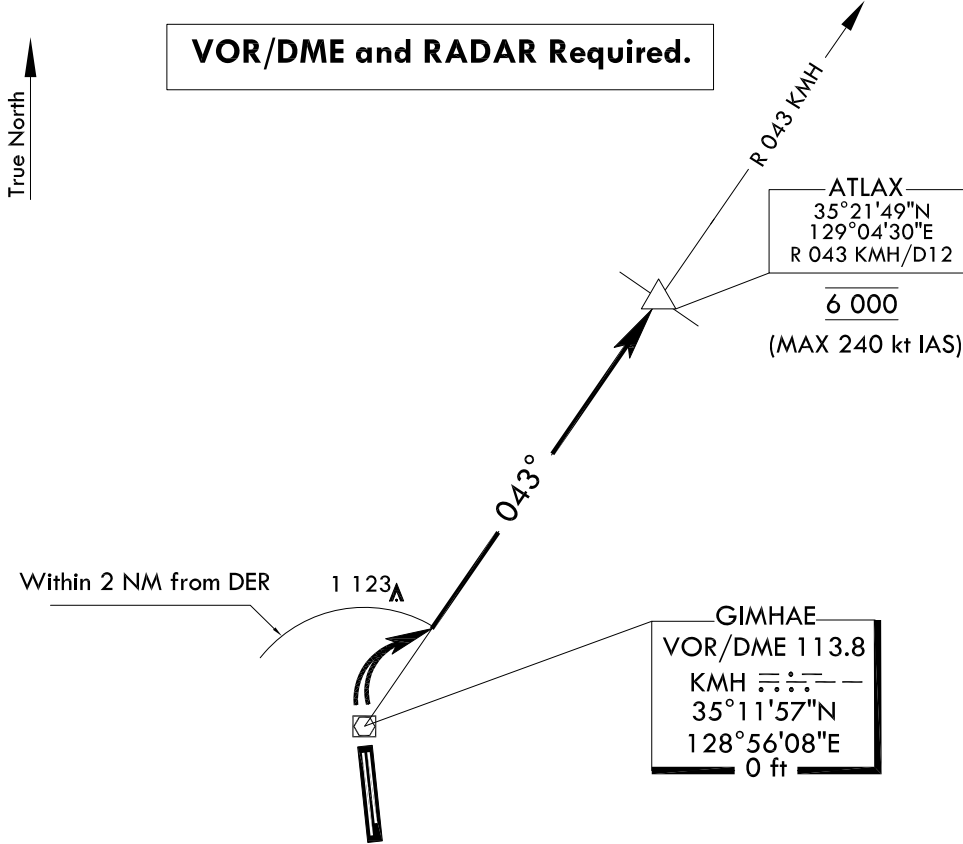
GIMHAE DEP 125.5
363.8
GIMHAE TWR 118.1
118.450

BUSAN/Gimhae Intl(RKPK)
RWY 36L/R
ATLAX 2

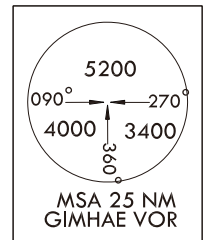
Note : Departure under U.S. TERPS.

CAUTION - Minimum Climb Rate to 6 000 ft						
RWY	Knots	60	120	180	240	300
36L/R	V/V(fpm)	500	1 000	1 500	2 000	2 500

ELEV, ALT IN FEET
DIST IN NM
BRG ARE MAG
VAR 9° W



- NOTE
1. All aircraft departing must complete turn within 2 NM from DER after take-off.
 2. Do not exceed 240 kt IAS below 6 000 ft.
 3. Minimum climb of 500 ft/NM to 6 000 ft.



NOT TO SCALE

DEPARTURE PROCEDURE DESCRIPTION

ATLAX 2 DEPARTURE

TAKE-OFF RWY 36L/R : Climbing right turn to intercept R 043 KMH and climb to 6 000 ft on R 043 KMH to ATLAX, then expect RADAR vector to assigned route and fix.

Change : Information of MAG VAR(7° W → 9° W) and standard instrument departure procedure for RWY 36L/R.

INTENTIONALLY

LEFT

BLANK

**BUSAN/Gimhae INTL(RKPK)
RWY 18L/R
RNAV(GNSS) BURIM 3**

AERONAUTICAL DATA TABULATION

Standard Instrument Departure Procedure Coding Tables

Departure Route - RWY 18L

Serial Number	Path Descriptor	Waypoint Identifier	Fly-over	Course/Track °M(°T)	Distance (NM)	Turn direction	Altitude (ft)	Speed (kt)	Coordinates	VPA/TCH	Navigation specification	Remarks
001	-	RWY 36R	-	-	-	-	-	-	35°10'10.10"N 128°56'26.14"E	-	RNAV 1	DER
002	CF	BURIM	-	186.85(178.33)	10.29	-	-	-230	34°59'52.3"N 128°56'48.1"E	-	RNAV 1	CG 370 ft/NM to 5 000 ft

Departure Route - RWY 18R

Serial Number	Path Descriptor	Waypoint Identifier	Fly-over	Course/Track °M(°T)	Distance (NM)	Turn direction	Altitude (ft)	Speed (kt)	Coordinates	VPA/TCH	Navigation specification	Remarks
001	-	RWY 36L	-	-	-	-	-	-	35°09'54.69"N 128°56'19.79"E	-	RNAV 1	DER
002	CF	BURIM	-	186.31(177.79)	10.03	-	-	-230	34°59'52.3"N 128°56'48.1"E	-	RNAV 1	CG 370 ft/NM to 5 000 ft

RNAV BURIM 3 - ENGOT Transition

Serial Number	Path Descriptor	Waypoint Identifier	Fly-over	Course/Track °M(°T)	Distance (NM)	Turn direction	Altitude (ft)	Speed (kt)	Coordinates	VPA/TCH	Navigation specification	Remarks
001	TF	BAHDA	-	186.30(177.78)	6.29	-	@5 000	-	34°53'34.4"N 128°57'05.8"E	-	RNAV 1	CG 370 ft/NM to 5 000 ft
002	TF	ENGOT	-	266.10(257.58)	22.96	-	+5 000	-	34°48'34.48"N 128°29'51.68"E	-	RNAV 1	-

RNAV BURIM 3 - BESNA Transition

Serial Number	Path Descriptor	Waypoint Identifier	Fly-over	Course/Track °M(°T)	Distance (NM)	Turn direction	Altitude (ft)	Speed (kt)	Coordinates	VPA/TCH	Navigation specification	Remarks
001	TF	BAHDA	-	186.30(177.78)	6.29	-	@5 000	-	34°53'34.4"N 128°57'05.8"E	-	RNAV 1	CG 370 ft/NM to 5 000 ft
002	TF	BESNA	-	159.87(151.35)	18.51	-	+5 000	-	34°37'18.0"N 129°07'51.0"E	-	RNAV 1	-

RNAV BURIM 3 - INVOK Transition

Serial Number	Path Descriptor	Waypoint Identifier	Fly-over	Course/Track °M(°T)	Distance (NM)	Turn direction	Altitude (ft)	Speed (kt)	Coordinates	VPA/TCH	Navigation specification	Remarks
001	TF	BAHDA	-	186.30(177.78)	6.29	-	@5 000	-	34°53'34.4"N 128°57'05.8"E	-	RNAV 1	CG 370 ft/NM to 5 000 ft
002	TF	INVOK	-	117.22(108.70)	19.38	-	+5 000	-	34°47'19.0"N 129°19'23.0"E	-	RNAV 1	-

RNAV BURIM 3 - PSN(VORTAC) Transition

Serial Number	Path Descriptor	Waypoint Identifier	Fly-over	Course/Track °M(°T)	Distance (NM)	Turn direction	Altitude (ft)	Speed (kt)	Coordinates	VPA/TCH	Navigation specification	Remarks
001	TF	PK513	-	149.76(141.24)	6.83	-	@5 000	-230	34°54'32.3"N 129°01'59.8"E	-	RNAV 1	CG 370 ft/NM to 5 000 ft
002	TF	PK514	-	059.81(051.29)	6.71	-	@5 000	-230	34°58'44.3"N 129°08'22.2"E	-	RNAV 1	-
003	TF	PSN	-	329.87(321.35)	11.03	-	@5 000	-	35°07'21.5"N 128°59'58.5"E	-	RNAV 1	VORTAC

Change : Information of standard instrument departure procedure for RWY 18L/R.

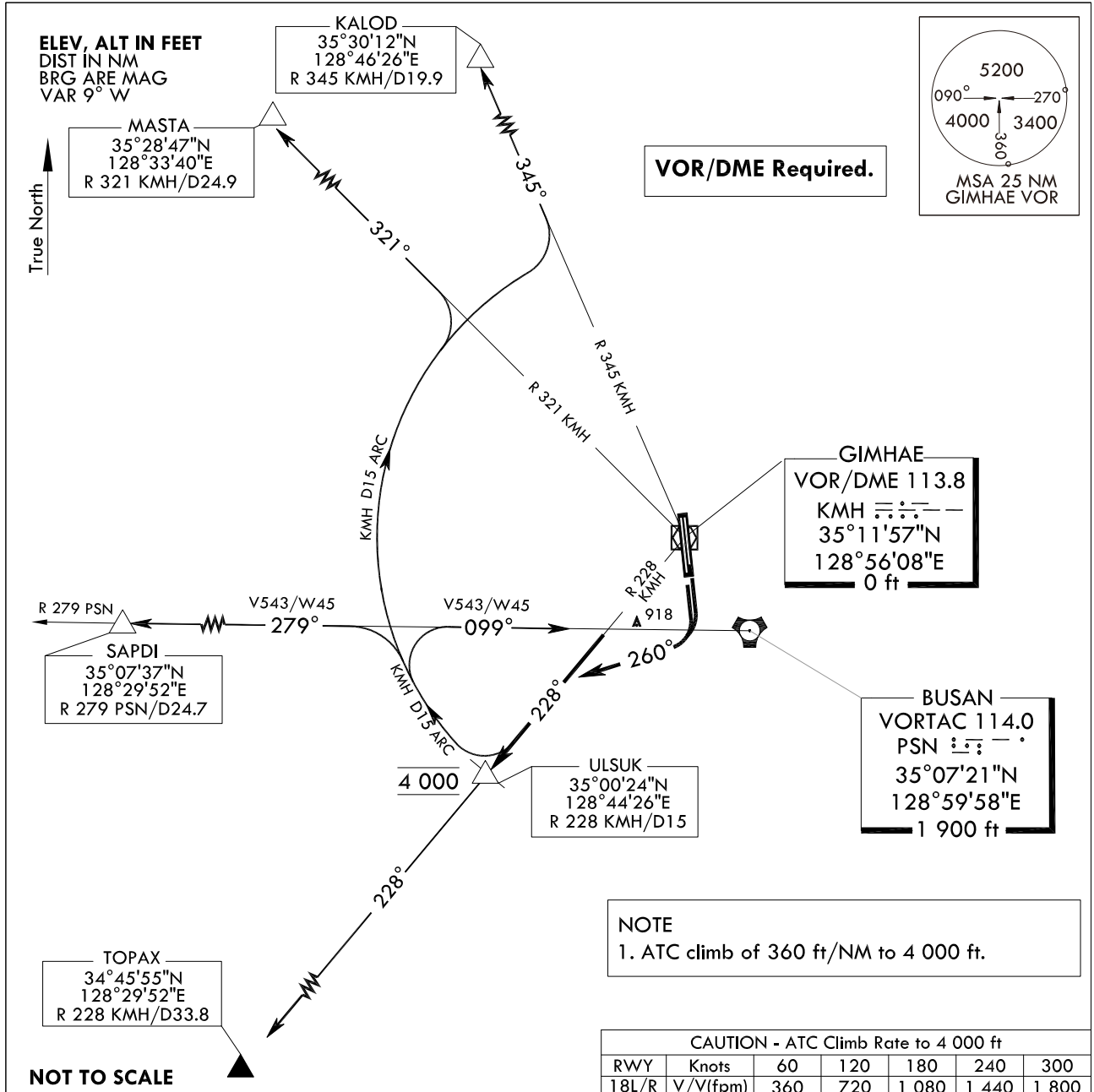
**STANDARD DEPARTURE
CHART - INSTRUMENT(SID)**

TRANSITION ALT 14 000
TRANSITION LVL FL 140

GIMHAE DEP 125.5
363.8
GIMHAE TWR 118.1
118.450

BUSAN/Gimhae Intl(RKPK)
RWY 18L/R
ULSUK 3

Note : Departure under U.S. TERPS.



DEPARTURE ROUTE DESCRIPTION

ULSUK 3 DEPARTURE

TAKE-OFF RWY 18L/R : Climbing right turn HDG 260° to intercept R 228 KM/H and R 228 KM/H to cross ULSUK at 4 000 ft, thence.....
.....via (TRANSITION), climb assigned altitude or as directed by ATC.

KALOD Transition : Right turn and proceed via KMH D15 arc to R 345 KM/H, then via R 345 KM/H to KALOD.

MASTA Transition : Right turn and proceed via KMH D15 arc to R 321 KM/H, then via R 321 KM/H to MASTA.

SAPDI Transition : Right turn and proceed via KMH D15 arc to R 279 PSN, then via R 279 PSN to SAPDI.

BUSAN(PSN) Transition : Right turn and proceed via KMH D15 arc to R 279 PSN, then via R 279 PSN to BUSAN (PSN).

TOPAX Transition : R 228 KM/H to TOPAX.

Change : Information of MAG VAR(7° W → 9° W) and standard instrument departure procedure for RWY 18L/R.

INTENTIONALLY

LEFT

BLANK

STANDARD DEPARTURE CHART
INSTRUMENT (SID)

TRANSITION ALT 14 000
TRANSITION LVL FL 140

GIMHAE DEP 125.5 363.8
GIMHAE TWR 118.1 233.3
118.450 236.6

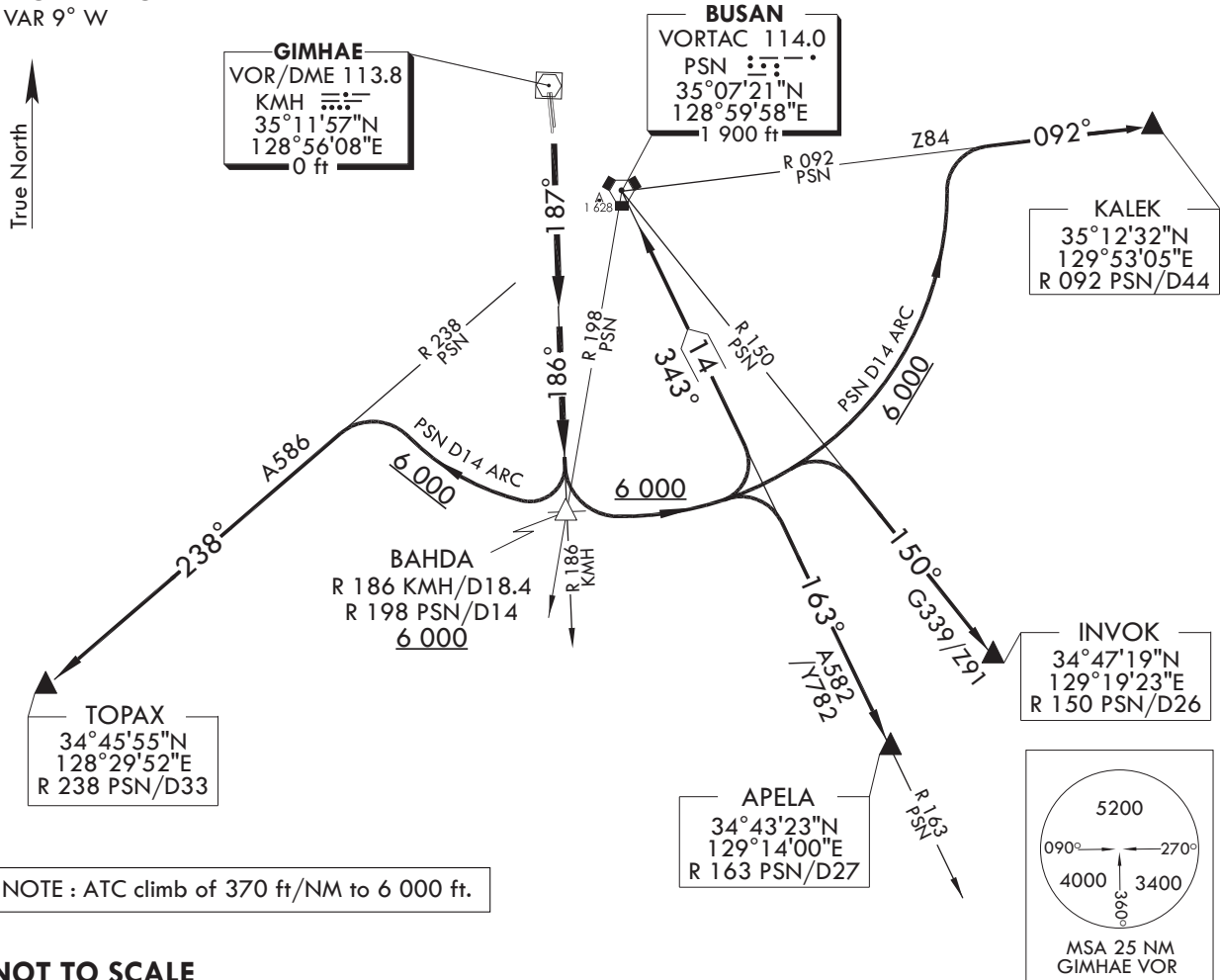
BUSAN/Gimhae INTL(RKPK)
RWY 18L/R
BAHDA 1

Note : Departure under U.S TERPS.

CAUTION - ATC Climb Rate to 6 000 ft						
RWY	Knots	60	120	180	240	300
18L/R	V/V(fpm)	370	740	1 110	1 480	1 850

ELEV, ALT IN FEET
DIST IN NM
BRG ARE MAG
VAR 9° W

VOR/DME Required.



NOTE : ATC climb of 370 ft/NM to 6 000 ft.

NOT TO SCALE

DEPARTURE ROUTE DESCRIPTION

BAHDA 1 DEPARTURE

TAKE-OFF RWY 18L/R : Climb 6 000 ft via HDG 187° to intercept R 186 KMH and R 186 KMH to cross BAHDA at or above 6 000 ft, thence.....
..... via (TRANSITION routes) and climb assigned altitude by ATC.

KALEK Transition : Left turn and proceed via the PSN D14 arc to intercept R 092 PSN then R 092 PSN to KALEK.

INVOK Transition : Left turn and proceed via the PSN D14 arc to intercept R 150 PSN then R 150 PSN to INVOK.

APELA Transition : Left turn and proceed via the PSN D14 arc to intercept R 163 PSN then R 163 PSN to APELA.

BUSAN(VORTAC) Transition : Left turn and proceed via the PSN D14 arc to intercept R 163 PSN then R 163 PSN to BUSAN VORTAC(PSN).

TOPAX Transition : Right turn and proceed via the PSN D14 arc to intercept R 238 PSN then R 238 PSN to TOPAX.

Change : Information of MAG VAR(7° W → 9° W) and standard instrument departure procedure for RWY 18L/R.

INTENTIONALLY

LEFT

BLANK